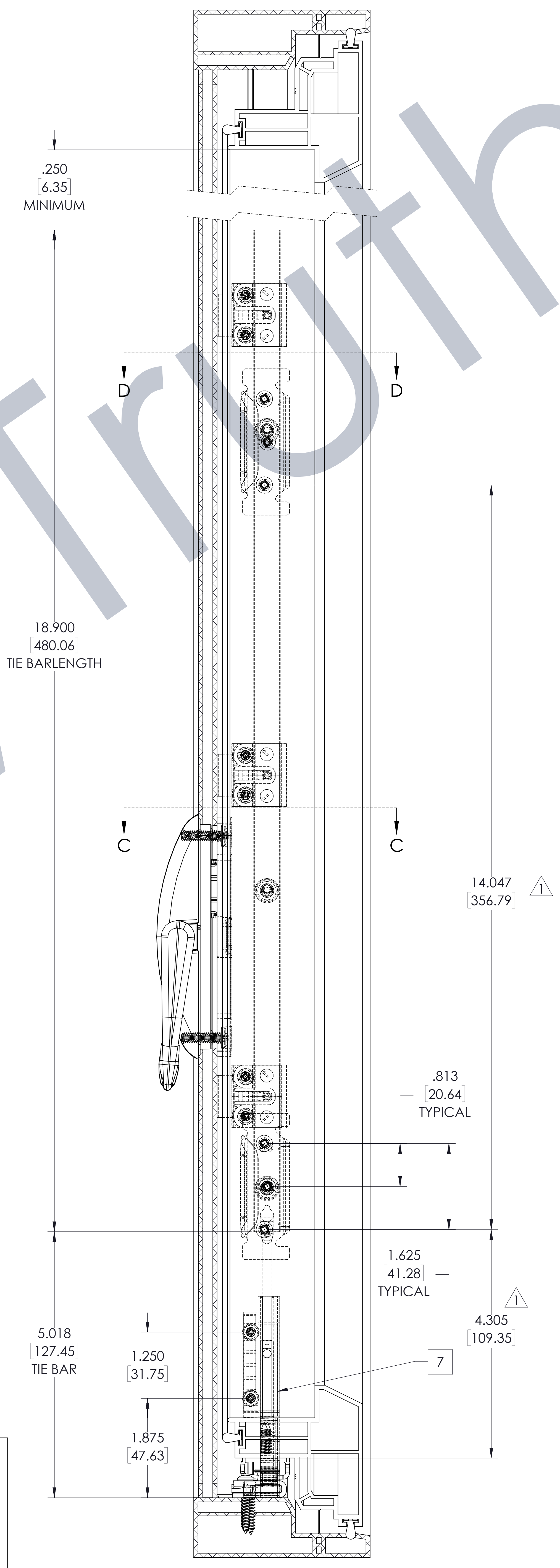
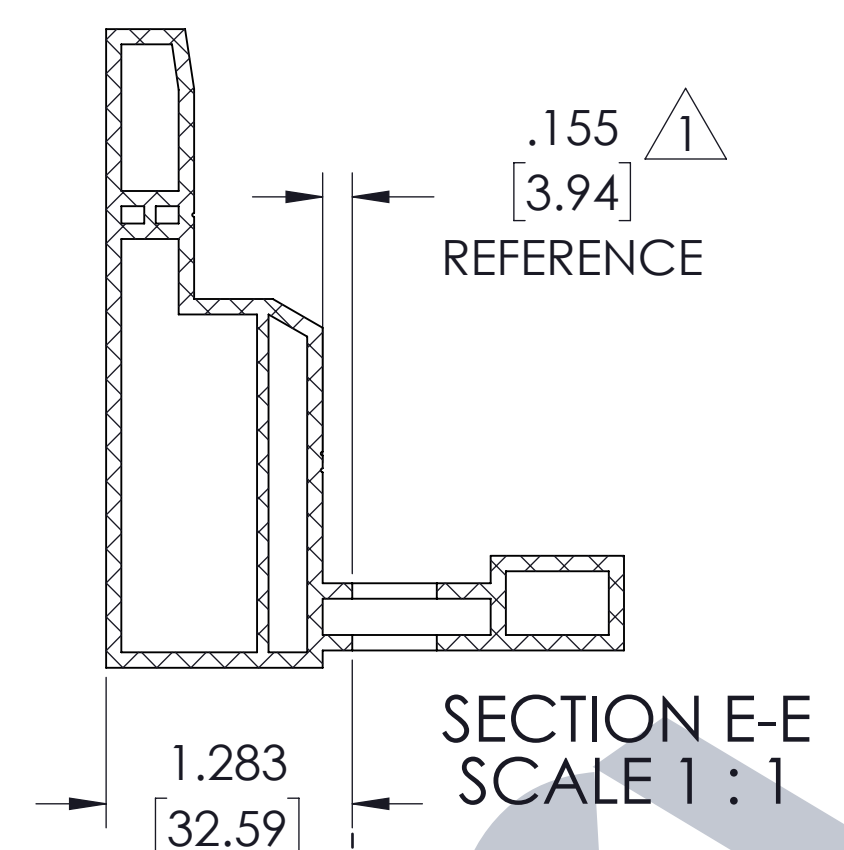
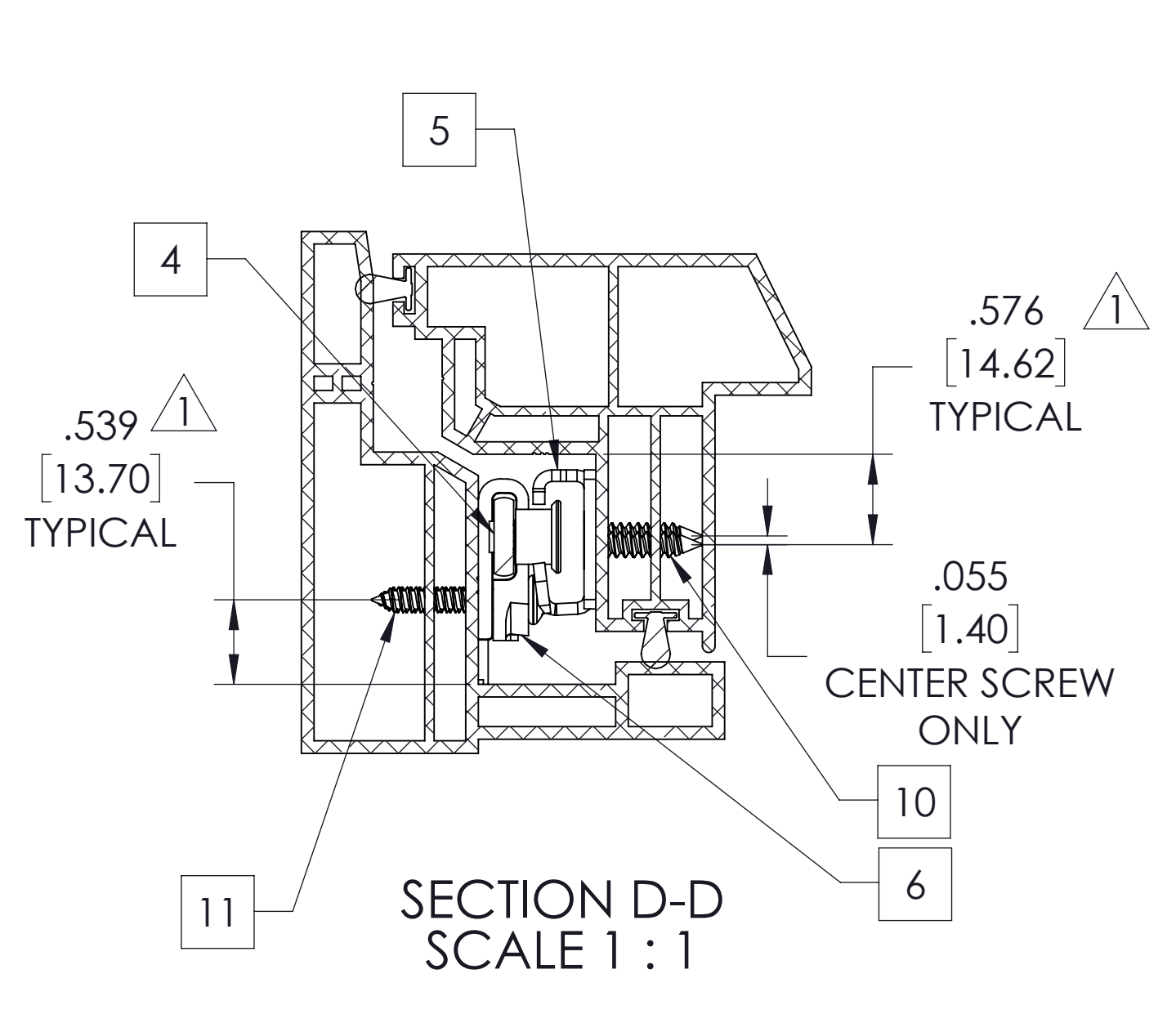
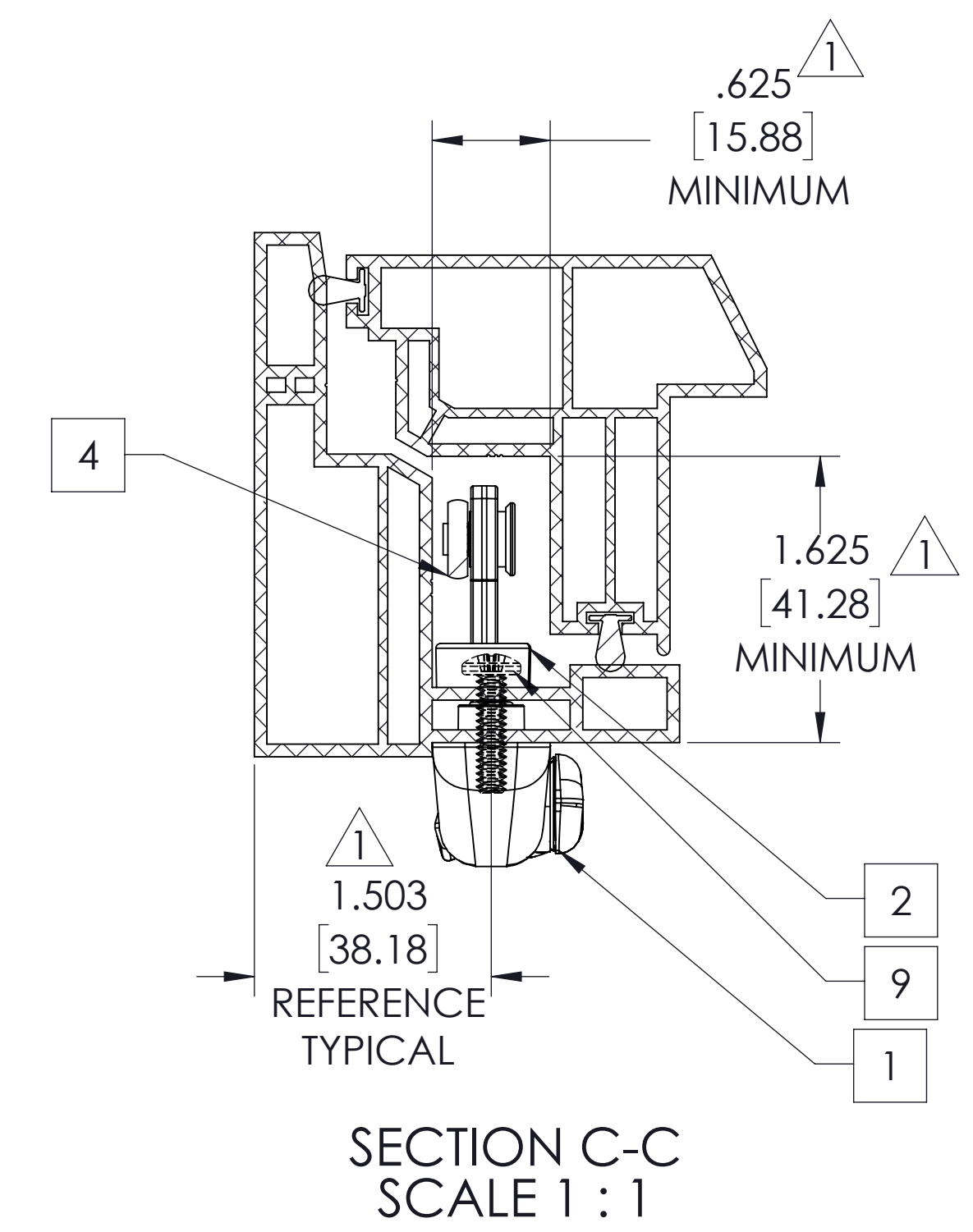
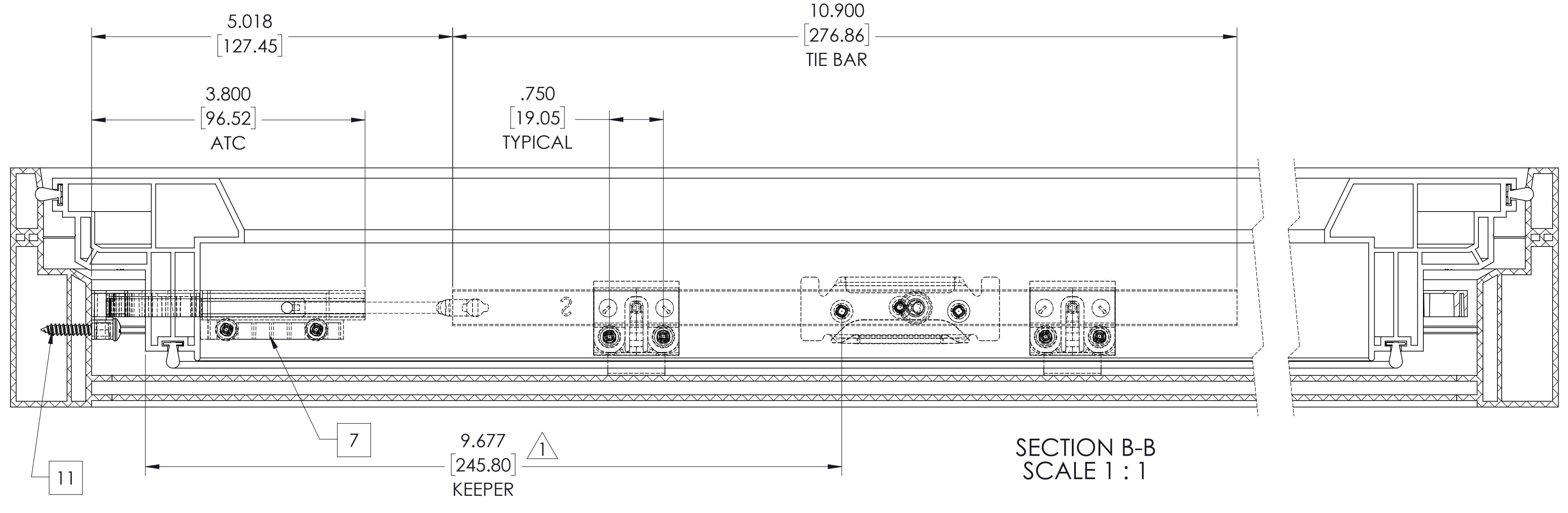


NO.	REV.	DATE	BY
1	CREATED		



ITEM NO.	PART NUMBER	DESCRIPTION	QTY.
1	24.33.XX.004	LOCK, SLDR MPT MID W/ GASKET	2
2	23820	DUAL DETENT PLATE W/TAB	2
3	14577.92.00.101	TIE BAR ASSEMBLY, MP ADJUSTABLE	2
4	14580.92.00.101	TIE BAR ASSEMBLY, MP ADJUSTABLE	2
5	24081.93	KEEPER, MULTIPOINT NH	6
6	33787-01	GUIDE, A=1.310 B=.320 C=.320	10
7	11251	ATC (AROUND THE CORNER) IMPORTED SDRG MODEL	2
8	21318	WIRE-LOCK	4
9	N-A	SCREW, 10-24 X 3/4 F PH MS YZ	4
10	19218.92	SCREW 8X3/4 PH FH SMS YZP	22
11	19230	SCREW 8X1 PH PH SMS YZP TYPE AB	28

- NOTES:
1. ACCURACY OF INDICATED DIMENSIONS ARE CRITICAL TO THE FUNCTION OF THE MULTI-POINT LOCKING.
 2. TIE BAR MOVES APPROXIMATELY 1.50".
 3. CONTACT TECHNICAL SERVICES FOR TIE BAR INFORMATION.

TRUTH HARDWARE MAKES NO WARRANTY OR REPRESENTATION OF ANY KIND, EXPRESS OR IMPLIED, WITH RESPECT TO QUALITY, CONTENT, FORM, PERFORMANCE, FITNESS FOR PURPOSE, MERCHANTABILITY OR OTHERWISE OF THE APPLICATION DRAWINGS PROVIDED. THESE DRAWINGS ARE USED AT THE RECIPIENT'S OWN RISK, AND TRUTH HARDWARE HAS AND SHALL HAVE NO RESPONSIBILITY FOR RECIPIENTS OR ANY THIRD PARTIES, USE OF THESE DRAWINGS OR ANY OF THE INFORMATION CONTAINED THEREIN. THE RECIPIENT AGREES TO INDEMNIFY, DEFEND, AND HOLD HARMLESS TRUTH HARDWARE AND ITS EMPLOYEES AND THEIR SUCCESSORS AND ASSIGNS FROM AND AGAINST ANY AND ALL CLAIMS, SUITS, LOSSES, DAMAGES OR COSTS INCURRED FROM USING THESE DRAWINGS OR ANY CONTENT THEREOF.

Amesbury Truth
 Engineered Solutions. Total Teamwork.
 700 West Bridge Street
 Owatonna, MN 55060
 Telephone 507-451-5620

THIS DRAWING IS THE PROPERTY OF TRUTH HARDWARE. THE INFORMATION THEREON IS TO BE TREATED AS CONFIDENTIAL. IF IT IS NOT TO BE USED, COPIED, OR DISCLOSED TO OTHER PARTIES, REMOVE OUR WATERMARK.
 DRAWN BY: M. NEFF DATE: 5/5/2022
 CHECKED BY: MDN SCALE: 1:4
 PARTNAME: GENERIC ATC AWNING USING 11251

PROJECT: GENERIC PVC DRAWING NO.: 21257N-1 REVISION: A TITLE: E